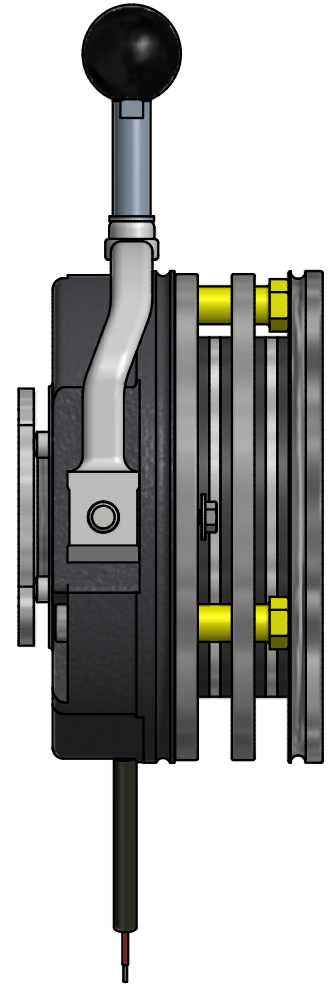
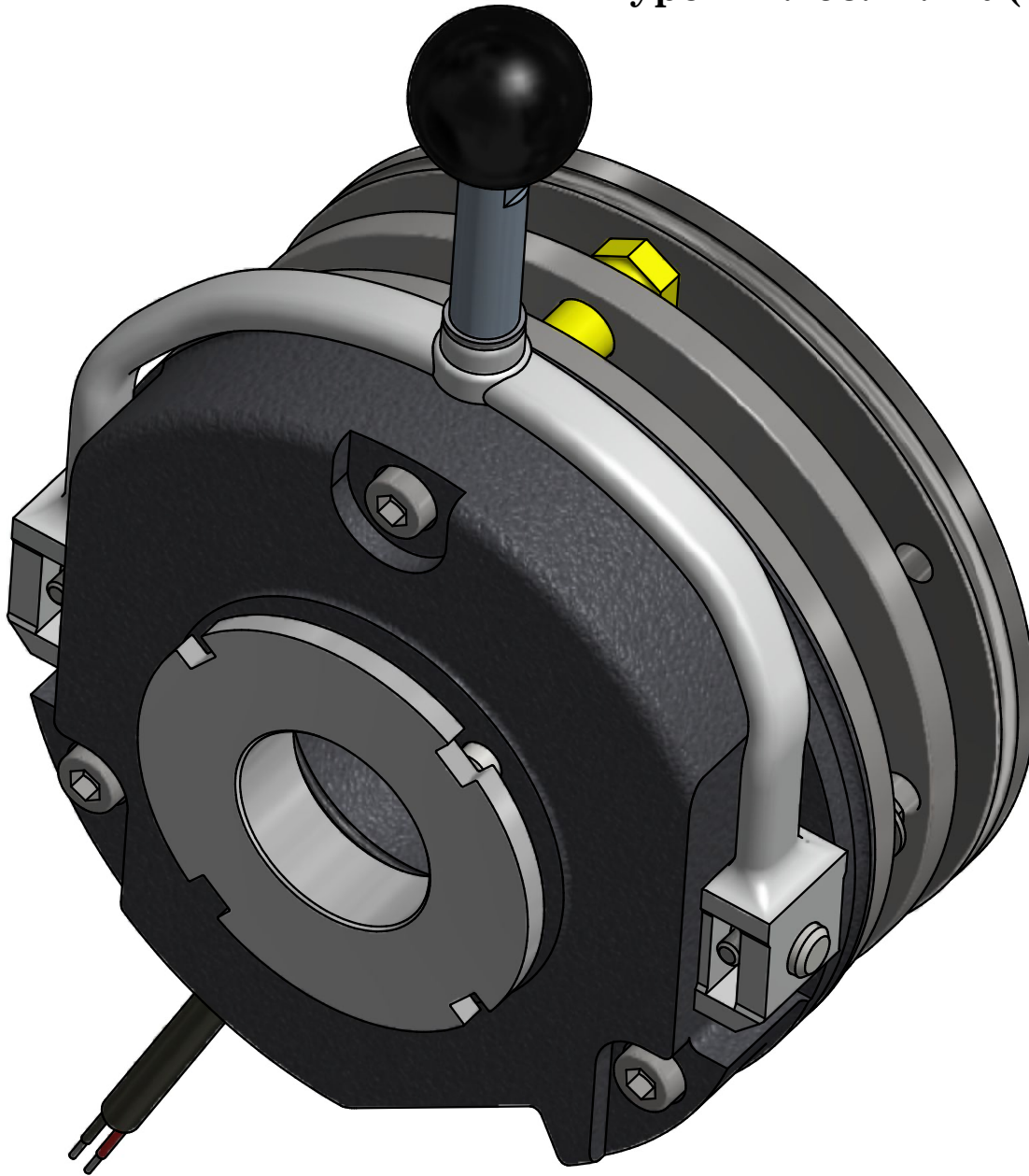


EMCO - Simplatroll

DC Spring Applied Double Rotor Brake

Type - 14.458.xx.DR (Normally On)



Salient Features of Type - 14.458.xx.DR

- ▶ **Deadman Type** Manual Release
- ▶ Braking Torque up to 1600 Nm
- ▶ Compact Size
- ▶ Easy Installation
- ▶ Rust Protection to All Metal Parts
- ▶ Simple Wear Adjustment
- ▶ Coil with ' F ' Class Insulation #
- ▶ Non Asbestos German friction liner
- ▶ Use of Special Bonding Agent
- ▶ Tacho Mounting possible
- ▶ Microswitch available on request
- ▶ Low rotor inertia
- ▶ Cold climate versions available

- Higher coil insulation available on request.

Applications

- ▶ Cranes & Hoists,
- ▶ Construction Machinery,
- ▶ Textile Machines
- ▶ Windmills
- ▶ Conveyors,
- ▶ Pallet Truck Drives
- ▶ Machine Tools
- ▶ Printing Machines
- ▶ Elevators,

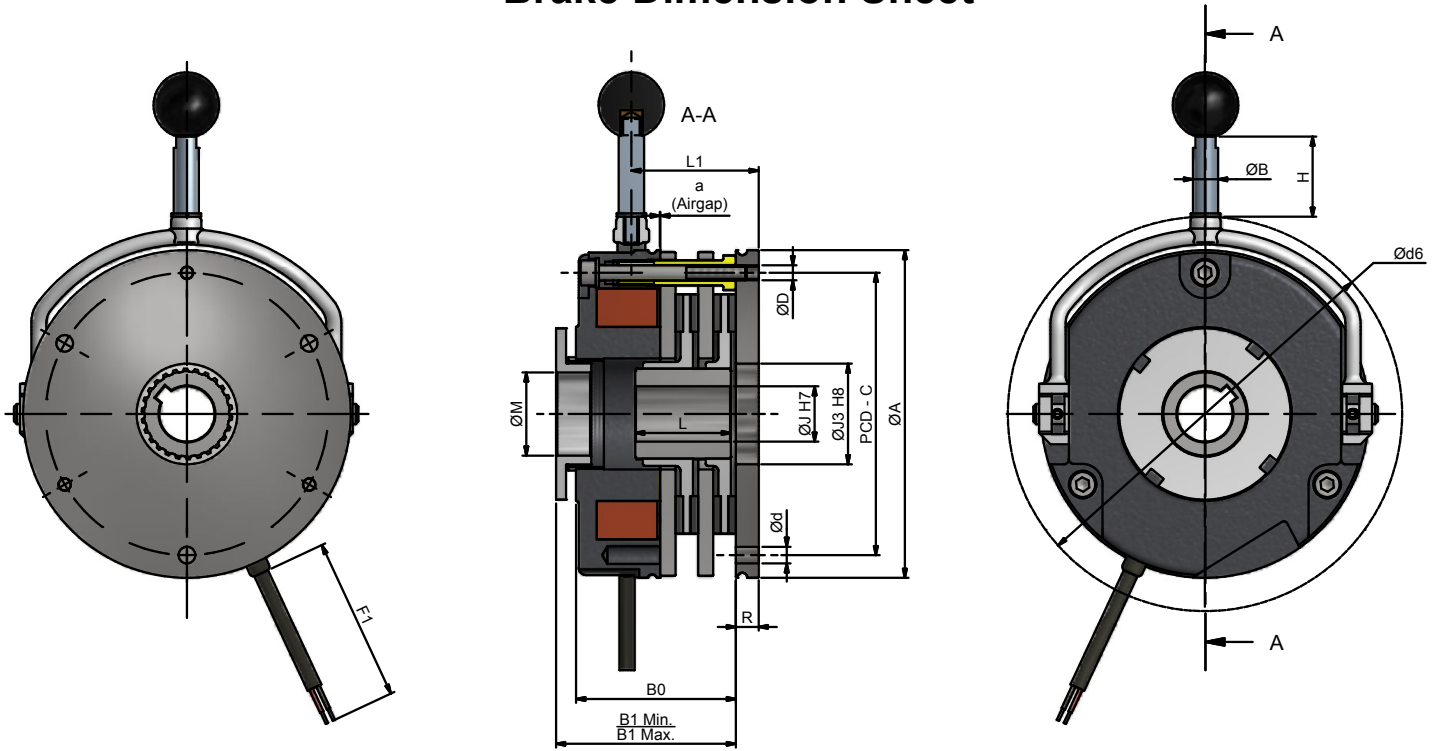
EMCO Dynatorq Pvt. Ltd.
(Formerly Emco Lenze Pvt. Ltd.)

Regd. Office :

1st Floor, Sita Mauli, above Bank of Maharashtra,
Madanlal Dhingra Road Panch Pakhadi,
Thane (West), 400 602, INDIA
Tel. : +91 (0) 22 2540 5490 / 2545 2244 / 2541 5913 / 2541 5914
Fax : +91 (0) 22 2545 2233
Email : mktg@emco-dynatorq.in

Website : www.emco-dynatorq.in

Brake Dimension Sheet



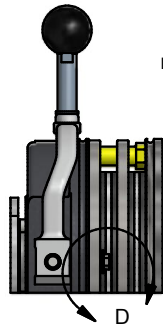
Brake shown with mounting flange

PARAMETERS																					
Brake Size	Input Power	Torque	a (Airgap)	ØA	PCD-C	ØD	Ød	ØM	ØJ H7	ØJ3 H8	B0	B1 min.	B1 max	R	Z	L	L1	ØB	H	Ød6	F1
14.458.06	20	2x4	0.2	87	72	3 x M4	3 x 4.5	24	10, 11, 12, 14, 15	31	47	51	53	6	1	32	32.3	9	30	120	410
14.458.08	25	2x8	0.2	105	90	3 x M5	3 x 5.5	26	11, 12, 14, 15, 19, 20, 24*	41	56	60.5	62	7	1.5	35	36.3	9	50	140	410
14.458.10	30	2x16	0.2	130	112	3 x M6	3 x 6.6	33	11, 12, 14, 15, 19, 20, 24	40	63.5	67.5	71	9	2	38	51.4	10	33.5	160	410
14.458.12	40	2x32	0.3	150	132	3 x M6	3 x 6.6	40	20, 24, 25, 28*	45	72.5	76.5	82	9	2	46	55.9	10	52.5	185	410
14.458.14	50	2x60	0.3	165	145	3 x M8	3 x 9	48	20, 24, 25, 28, 30, 32, 34*	55	85.5	90.5	96	11	2	52	63	12	62.5	210	410
14.458.16	76	2x100	0.3	190	170	3 x M8	3 x 9	56	25, 28, 30, 32, 34, 35, 38*	65	93	98	103	11	2.25	56	58	12	95	235	610
14.458.18	85	2x150	0.4	217	196	6 x M8	**4 x 9	64	30, 35, 40, 42, 45	75	107.5	113	122	11	2.75	64	76.1	14	120	270	610
14.458.20	100	2x260	0.4	254	230	6 x M10	6 x 11	73.1	35, 40, 42, 45, 48, 50	90	127	133.5	143	11	3.5	73	87.6	14	239	308	610
14.458.25	110	2x400	0.5	302	278	6 x M10	6 x 11	95.1	45, 48, 50, 52, 55, 60, 65, 70*	120	141	150	158	12.5	4.5	95	104.2	16	239	360	610
14.458.31	140	2x600	0.5	302	278	6 x M10	6 x 11	95.1	45, 48, 50, 52, 55, 60, 65, 70*	120	154.7	168.7	178.7	16	4.5	95	107.7	16	239	360	610
14.458.31	180	2x800	0.5	302	278	6 x M10	6 x 11	95.1	45, 48, 50, 52, 55, 60, 65, 70*	120	154.7	168.7	178.7	16	4.5	95	107.7	16	239	360	610

Liner wear is directly proportional to the speed at which braking takes place.

Important :-

- For vertical mounting contact us.
- For applications with motor operated with VFD contact us for special circuit.
- Standard voltages : 24 V DC, 96 V DC & 190 V DC. (Other voltages on request.)
- P : Coil power at 20° C.
- Permissible voltage change + 5% to - 10%.
- Recommended ISO shaft tolerances Up to Ø50 mm = k6, Over Ø50 = m6.
- Keyways to DIN 6885 / IS : 2048. (Js9)
- (* Non std. Keyway & Hub Bore)
- Specifications are subject to change without notice.



Brake Shown Manual Hand Release & " U " Gap

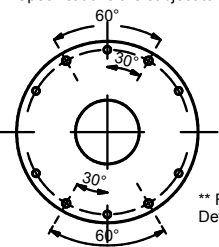
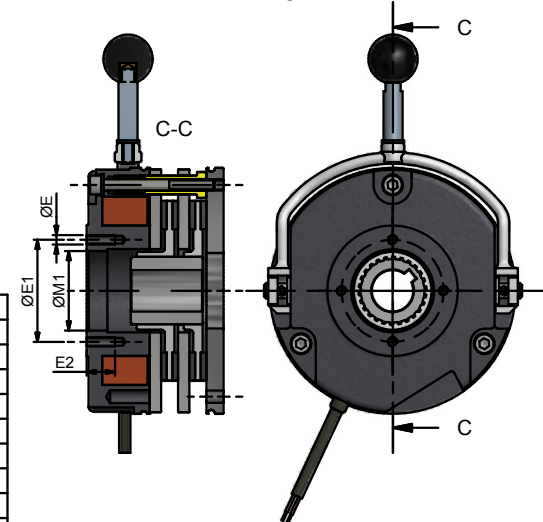


Detail - D

PARAMETERS	
Brake Size	U Gap
14.458.06	1
14.458.08	1
14.458.10	1
14.458.12	1
14.458.14	1
14.458.16	1.5
14.458.18	1.5
14.458.20	1.5
14.458.25	2
14.458.31	2

PARAMETERS				
Brake Siz	ØM1	ØE1	ØE	E2
14.458.06	25	37.7	4 x M4	10
14.458.08	32	49	4 x M5	12
14.458.10	42	54	4 x M5	15
14.458.12	50	64	4 x M5	15
14.458.14	60	75	4 x M6	15
14.458.16	68	85	4 x M6	15
14.458.18	75	95	4 x M8	15
14.458.20	85	110	4 x M10	20
14.458.25	115	140	4 x M10	20
14.458.31	115	140	4 x M10	20

Brake shown with Tacho Mounting Provision



** Flange Mounting Detail for Size - 14.458.18