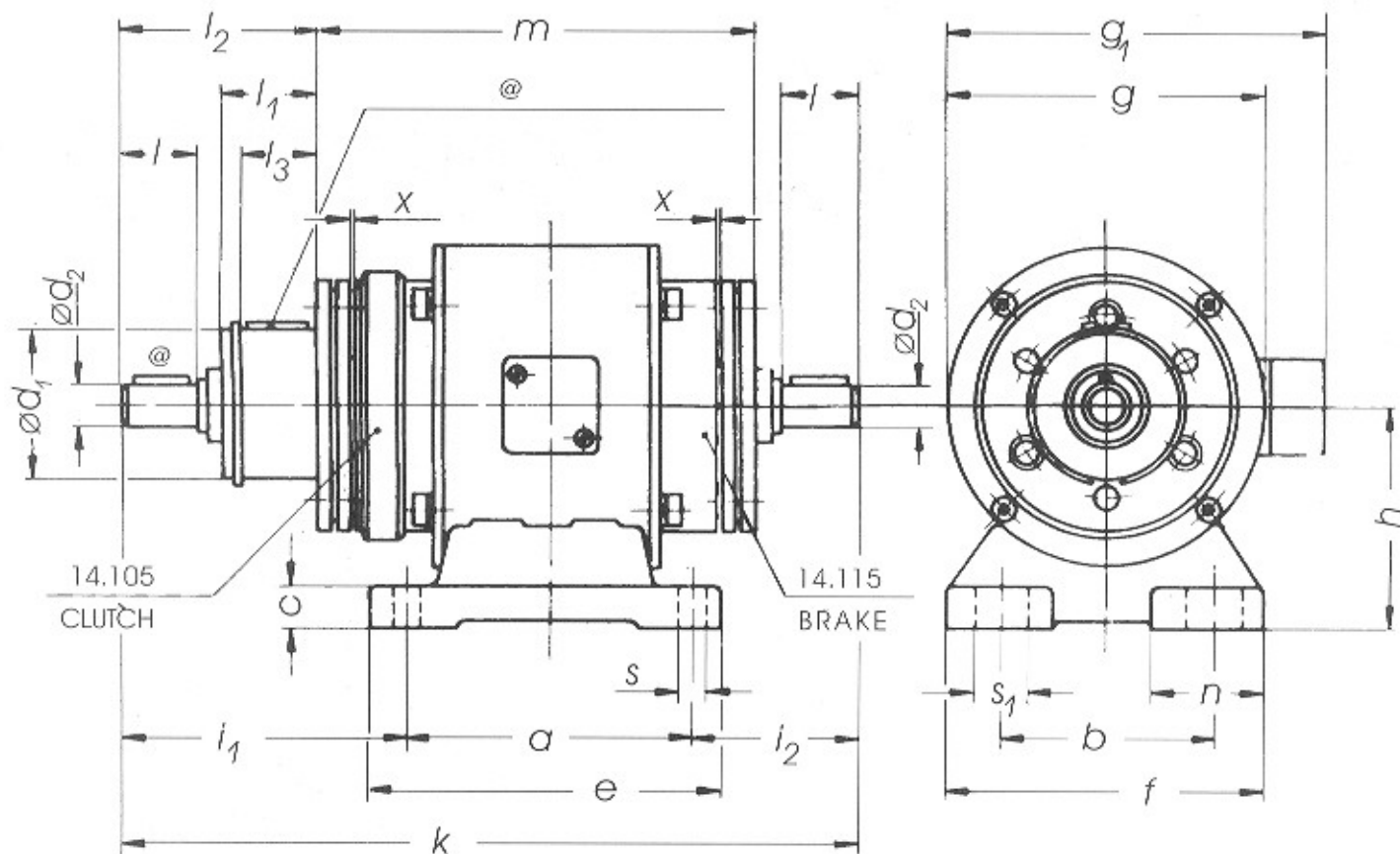


# CLUTCH-BRAKE UNIT

TYPE : 14.121

## DIMENSIONS & PARAMETERS (All in mm)



| SIZE | T<br>Nm | Clutch<br>P/Watt<br>20°C | Brake<br>P/Watt<br>20°C | a   | b     | c  | $d_{1,6}$ | $d_{2,12}$ | e   | f   | g   | $g_1$ | h   | $i_1$ | $i_2$ | k     | l   | $l_1$ | $l_2$ | $l_3$ | m     | n    | s    | $s_1$ | x    |
|------|---------|--------------------------|-------------------------|-----|-------|----|-----------|------------|-----|-----|-----|-------|-----|-------|-------|-------|-----|-------|-------|-------|-------|------|------|-------|------|
| 06   | 7.5     | 15                       | 11.5                    | 75  | 55    | 10 | 38        | 11         | 90  | 80  | 80  | 122   | 55  | 64    | 43    | 182   | 25  | 20    | 45.5  | 17    | 106.6 | 27.5 | 6.5  | 13.5  | 0.25 |
| 08   | 15      | 20                       | 16                      | 90  | 65    | 10 | 45        | 14         | 105 | 90  | 100 | 142   | 65  | 77.5  | 51.5  | 216   | 30  | 25    | 56    | 22    | 126.6 | 27.5 | 6.5  | 13.5  | 0.25 |
| 10   | 30      | 28                       | 21                      | 110 | 80    | 14 | 55        | 19         | 130 | 110 | 125 | 168   | 80  | 98    | 61    | 270   | 40  | 30    | 71.5  | 26.5  | 154   | 32.5 | 9    | 15.5  | 0.3  |
| 12   | 60      | 35                       | 28                      | 135 | 105   | 17 | 64        | 24         | 160 | 140 | 150 | 192   | 90  | 121.5 | 75.5  | 332   | 50  | 40    | 92.5  | 36.5  | 183.6 | 35   | 11.5 | 20    | 0.35 |
| 16   | 120     | 50                       | 38                      | 160 | 135   | 17 | 75        | 28         | 185 | 175 | 190 | 231   | 112 | 150   | 91    | 400   | 60  | 50    | 112.5 | 44.5  | 222   | 42.5 | 11.5 | 24.5  | 0.4  |
| 20   | 240     | 68                       | 45                      | 200 | 155   | 18 | 90        | 38         | 230 | 200 | 230 | 272   | 132 | 189   | 116   | 505   | 80  | 60    | 143.5 | 53.5  | 276   | 45   | 14   | 28    | 0.5  |
| 25   | 480     | 85                       | 70                      | 240 | 192.5 | 20 | 115       | 42         | 270 | 240 | 290 | 331   | 160 | 240   | 155.5 | 635.5 | 110 | 70    | 185   | 63.7  | 334   | 47.5 | 14   | 28.5  | 0.5  |

### SIZE SELECTION

Approximate necessary Torque or Size of a unit for applications involving low inertia, low operating frequency etc. is determined as :

$$\text{TORQUE} = 9550 \times (\text{K.W.} / \text{SPEED}) \times \text{SAFETY FACTOR (K)}$$

### SAFETY FACTOR (K)

To ensure necessary transmission safety also under extreme operating conditions adequate safety factor must be considered, the value of which depends on operating conditions namely, the type of load, prime mover etc.

### ORDERING INFORMATION

1. TYPE 2. SIZE 3. VOLTAGE

### TYPICALLY

|  |       |
|--|-------|
| Low masses, equal loading & non-intermittent operation   | [2.0] |
| Low masses, light shock load & intermittent operation    | [2.5] |
| Medium masses, light shock load & intermittent operation | [3.0] |
| Large masses, strong shock load & intermittent operation | [4.0] |
| Diesel Engine Drive                                      | [4-5] |
| Compressor Driven  | [5-6] |
| Non-Overhauling Loads                                    | [2-3] |
| Overhauling Loads  | [3-4] |

However, we recommend you to perform detailed calculations for which please call for our additional size selection data.

T : Torque

### IMPORTANT :

1NM = 0.102 kgm = 0.737 lb. ft.  
Standard voltages : 24 V. D. C.; 96 V. D.C.; 190 V. D. C.  
Other voltages on request

@ Keyways to Indian Standard wherever possible otherwise to DIN or BS.

Specifications are subject to change without notice

### Manufacturers :

### EMCO DYNATORQ PVT. LTD.

1st floor, Sita Mauli, Above Bank of Maharashtra,  
Madanlal Dhingra Road, Panch Pakhadi,  
Thane (W), 400 602.  
Tel. : 022 - 2540 5490 / 2545 2244 / 2541 5913  
Fax : 022 - 2545 2233  
E-mail : mktg@emco-dynatorq.in  
Internet : www.emco-dynatorq.in