



Emco Dynatorq Pvt. Ltd.
(Formerly Emco Lenze Pvt. Ltd.)

ISO 9001:2008 Company

Electro Magnetic Dual Circuit Spring Applied DC Brake (EDCB)



BRAKING SYSTEM FOR LIFT APPLICATIONS

Emco Dynatorq is a leader in design & manufacturing of spring applied electrically released brake.

We offer ranges of brakes in customised solutions to meet the specific performance and installation requirements of the elevators, lifts & traction machine manufacturer.

EDCB is an electrically released safety dual circuit brake.

Safety is the prime priority when using these brakes in elevators & lifts systems.

EDCB is a dual circuit split armature brake which is capable of generating high level of braking torque.

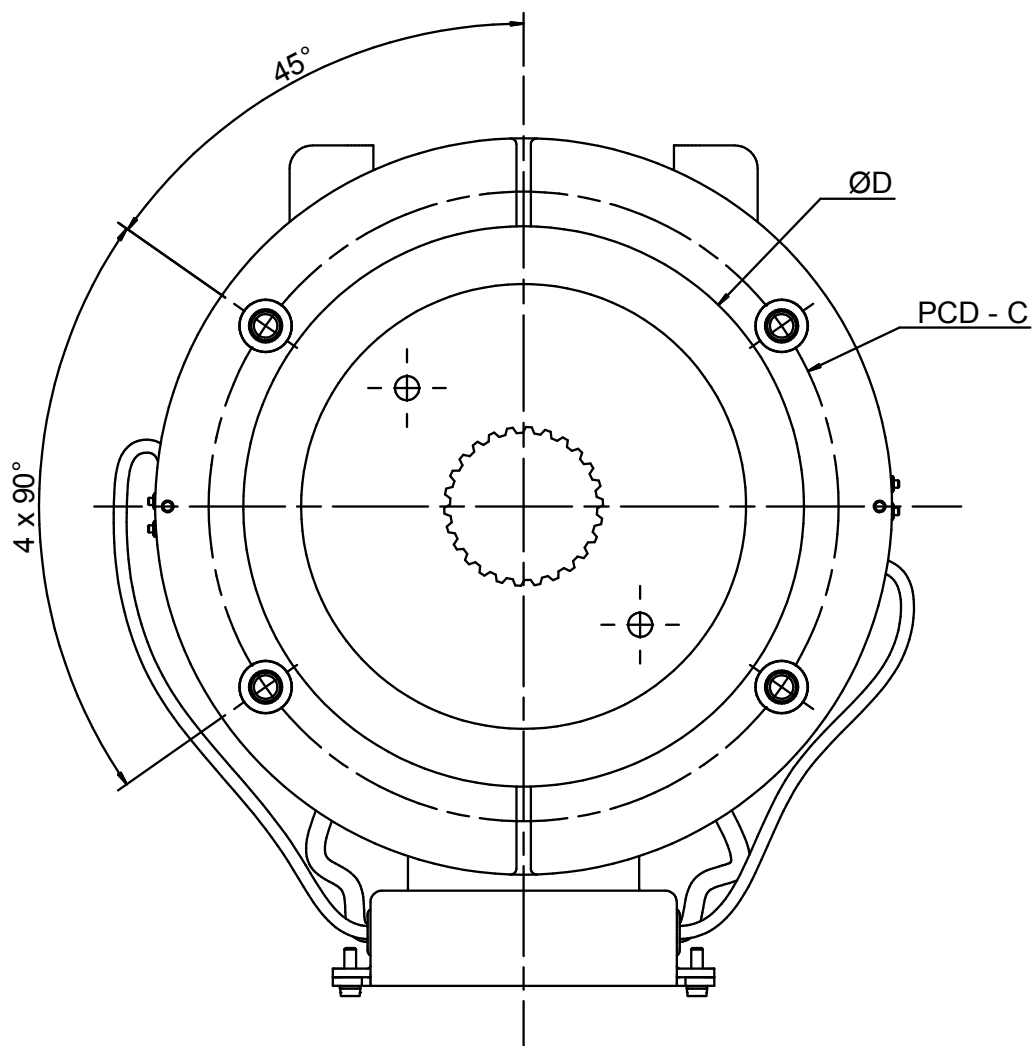
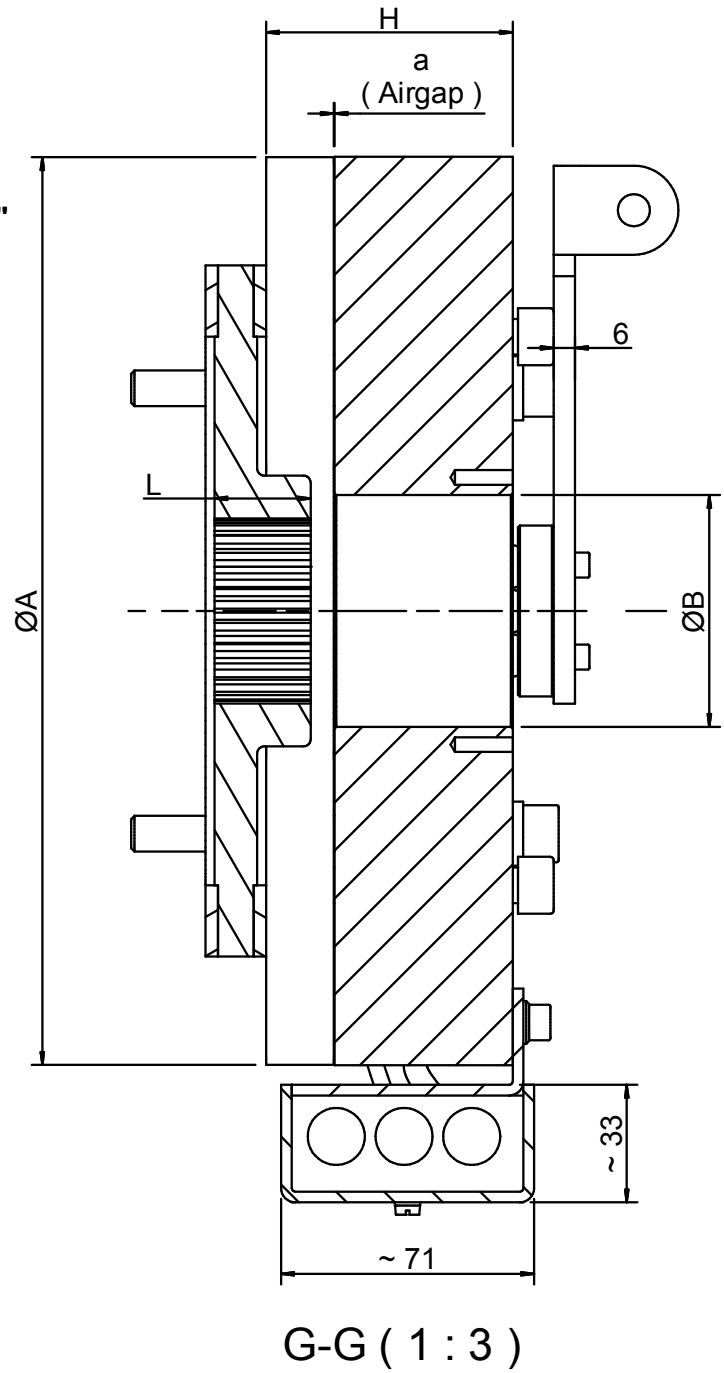
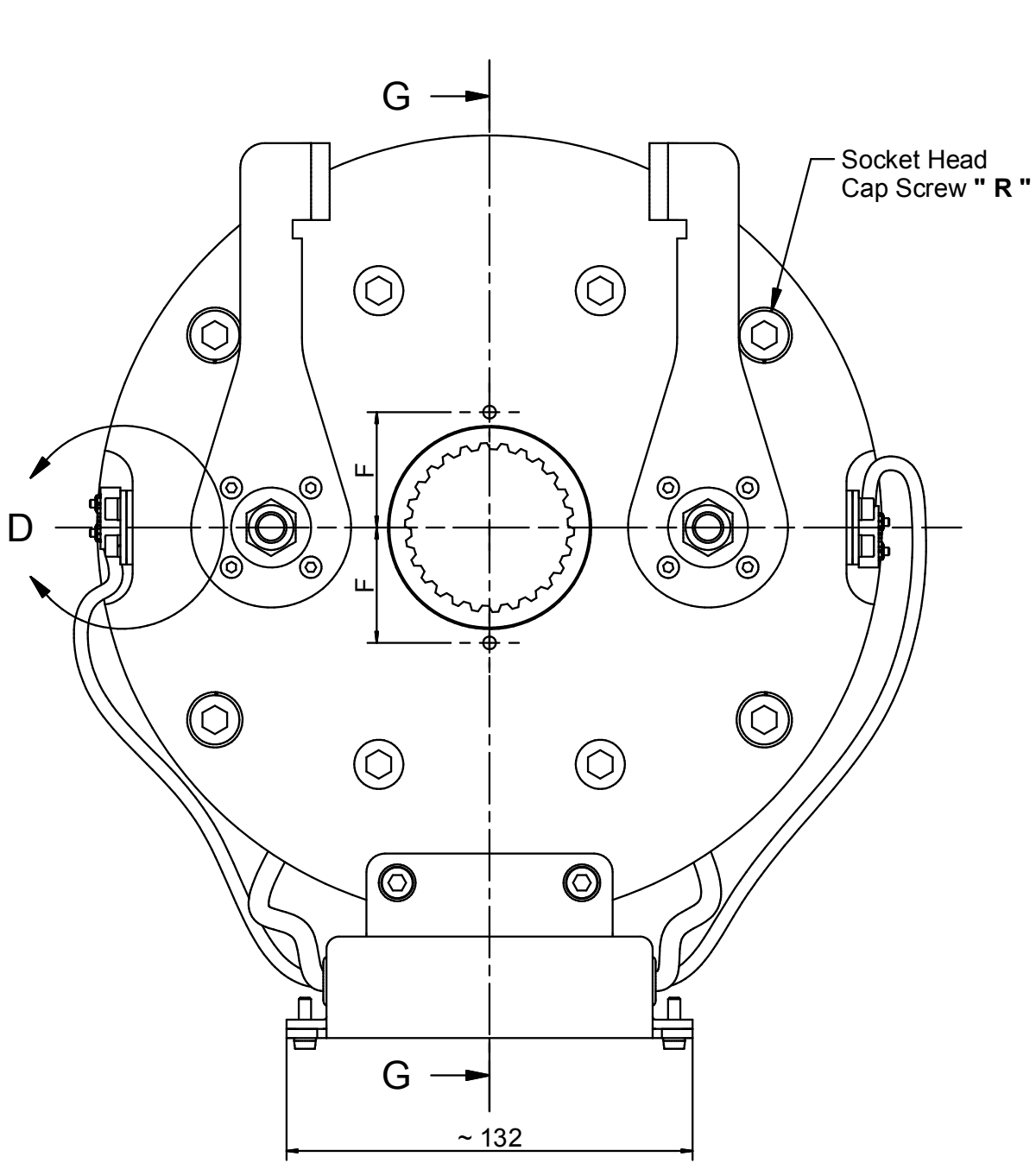
FEATURES

- 1) Dual Circuit brake system according to EN81.
- 2) Braking torque up to 2 x 1200 Nm
- 3) Redundant braking system.
- 4) Cam type manual brake release system for easy operation.
- 5) Low engagement & dis-engagement noise ≤ 55 dB
- 6) Both armature plates can be individually operated
- 7) Fixed air gap type
- 8) Microswitch are used for monitoring brake circuit operation (Release & wear).
- 9) Working ambient temp. -5° to $+45^{\circ}$ C
- 10) Easy installations
- 11) Class of insulation " F ". Higher insulation class circuit can be offered request
- 12) Zero maintenance (only rotor need to be monitored & replace if required)

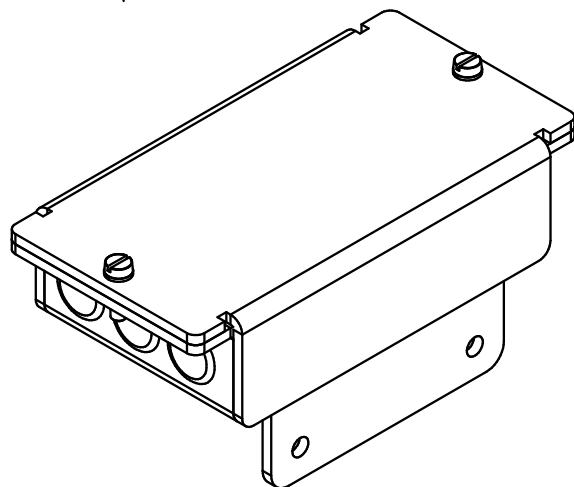
***** These Brakes are also available in UL Version - EDCB - 2 - xxxx - xxxx**

***** These Brakes can also be offered without over excitation voltage**

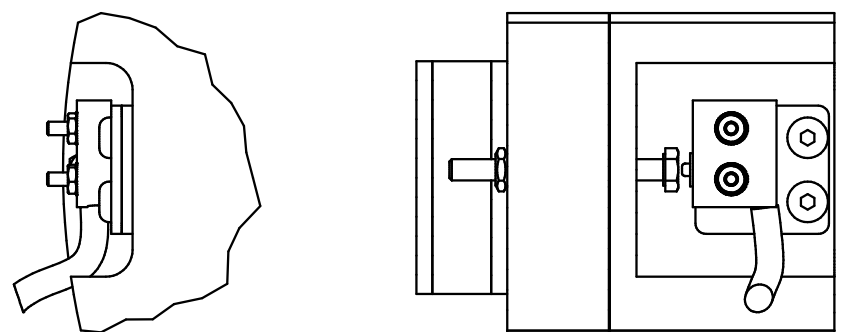
Dimension Details



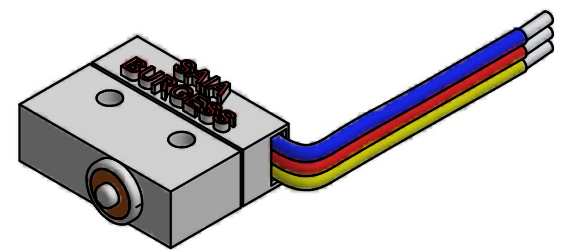
Terminal Box
(Optional Items)



Microswitch Detail (Optional Items)

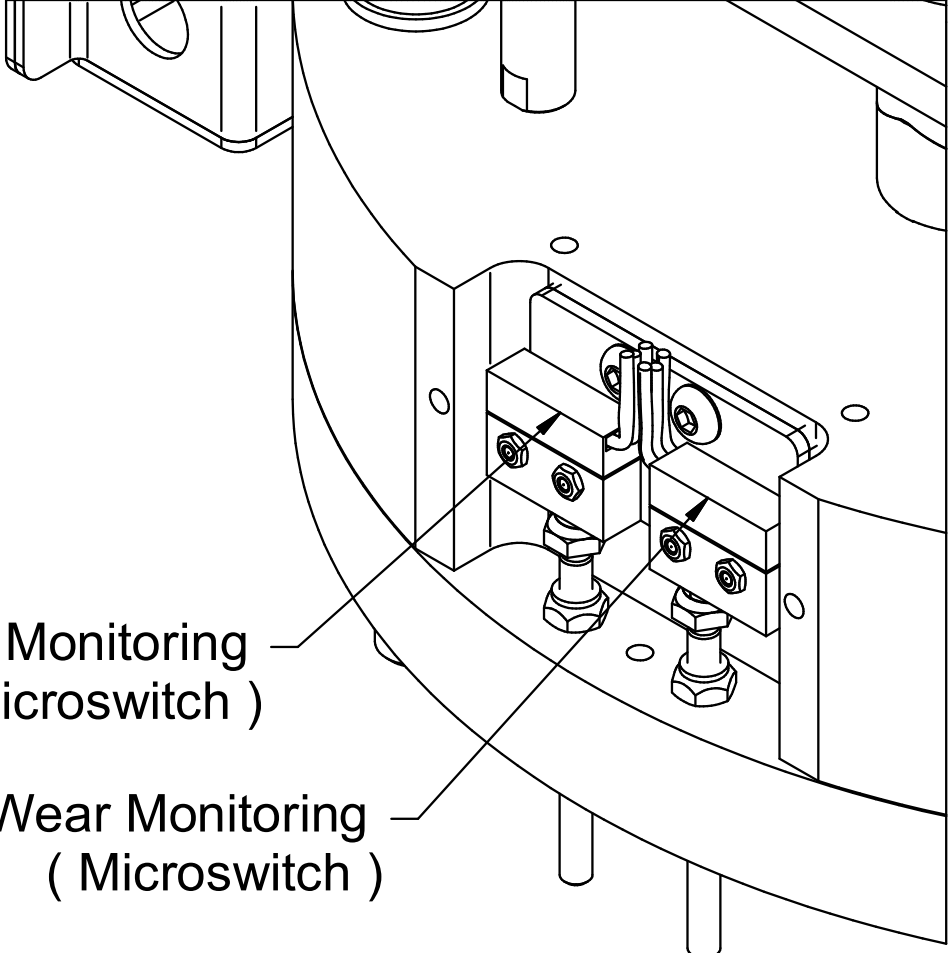
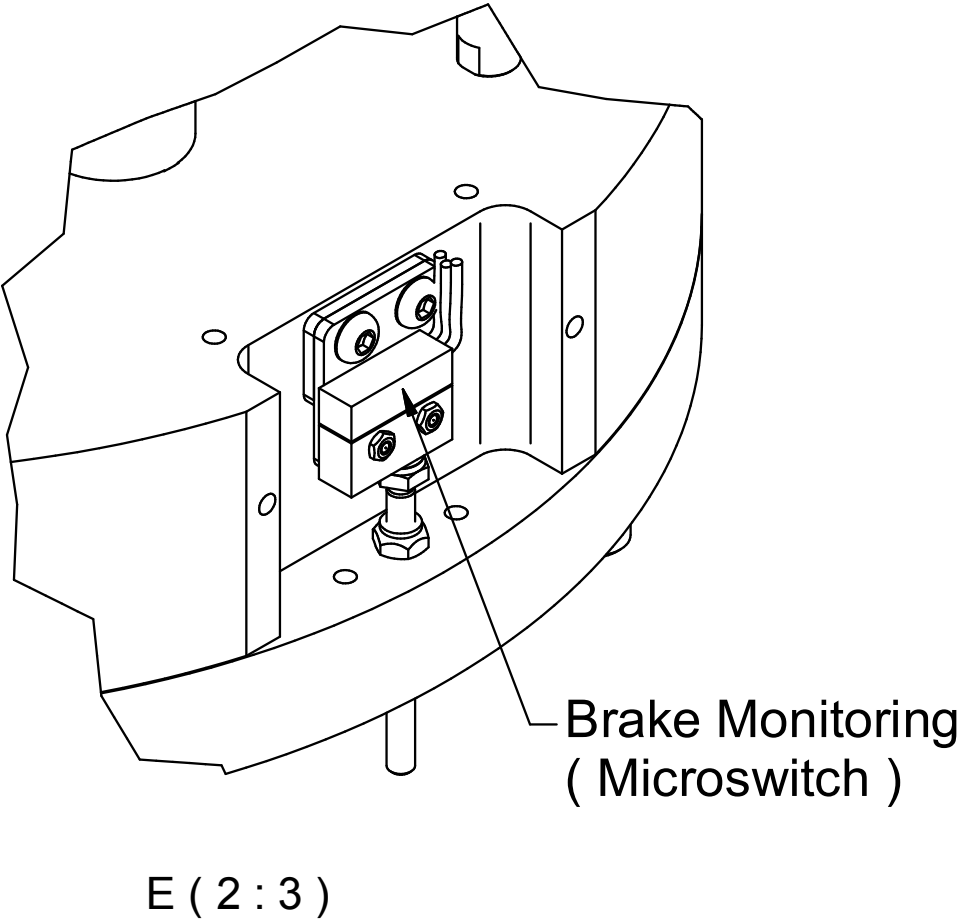
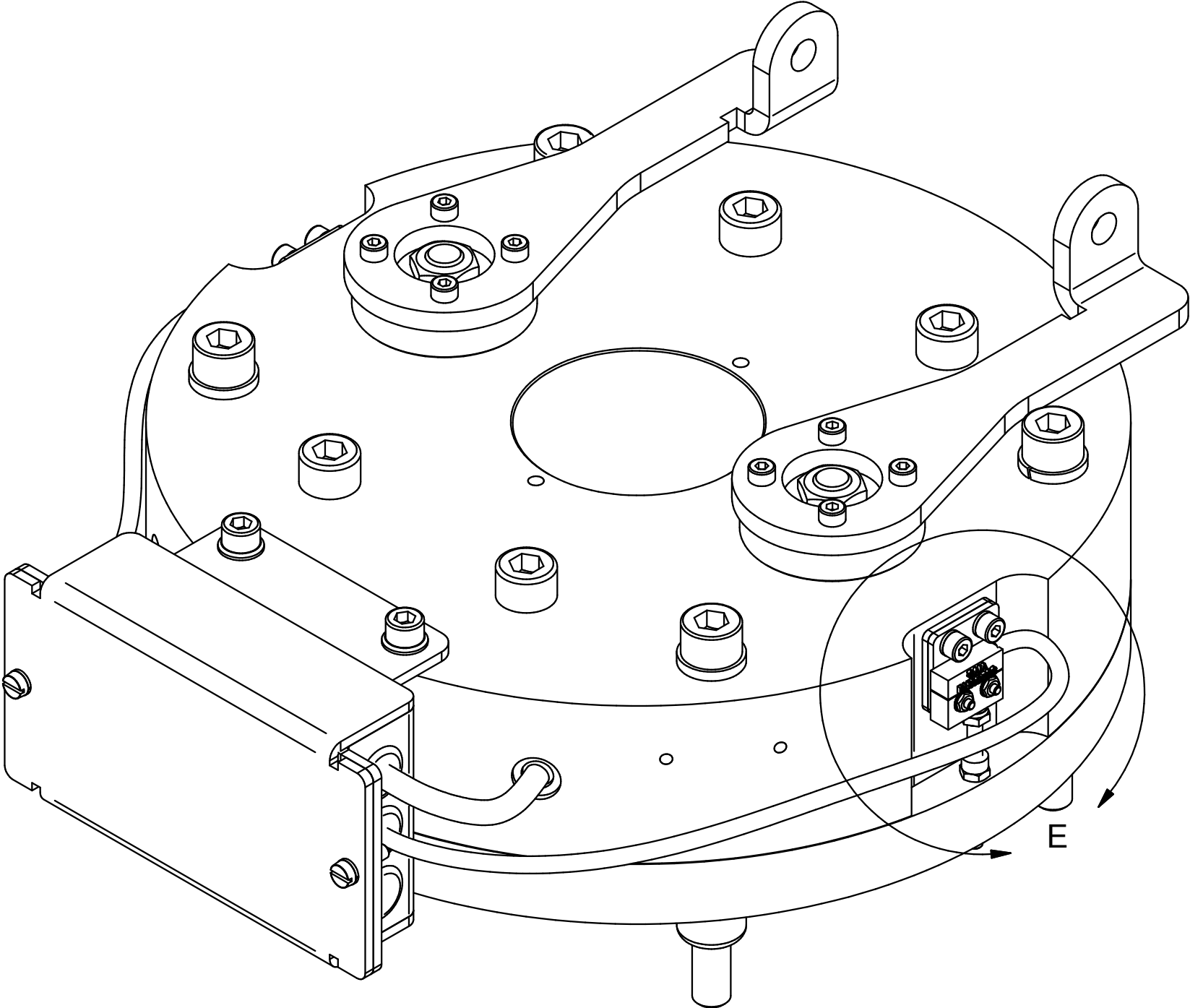


D (1 : 2)



Microswitch Lead wire detail & Make Detail
 Red :- C (Common)
 Yellow :- N.C. (Normally Closed)
 Blue :- N.O. (Normally Open)
 Electrical Rating :- 3A / 250 V AC
 Sealed :- IP 67

Brake & Liner wear monitoring



Dimension Details

Brake Parameters				
Brake Size	Brake Torque	Brake Power	Brake Voltage	Brake Current
EDCB - 90	2 x 90	90 W	220 / 110 VDC	0.81 Amp
EDCB - 120	2 x 120	102 W	206 / 103 VDC	0.99 Amp
EDCB - 180	2 x 180	100 W	220 / 110 VDC	0.90 Amp
EDCB - 210	2 x 210	100 W	206 / 103 VDC	0.99 Amp
EDCB - 225	2 x 225	100 W	220 / 110 VDC	0.90 Amp
EDCB - 275	2 x 275	100 W	220 / 110 VDC	0.90 Amp
EDCB - 300	2 x 300	130 W	220 / 110 VDC	1.18 Amp
EDCB - 350	2 x 350	130 W	220 / 110 VDC	1.18 Amp
EDCB - 360	2 x 360	208 W	220 / 110 VDC	1.18 Amp
EDCB - 450	2 x 450	240 W	220 / 110 VDC	2.18 Amp
EDCB - 600	2 x 600	240 W	220 / 110 VDC	2.18 Amp
EDCB - 750	2 x 750	240 W	220 / 110 VDC	2.18 Amp
EDCB - 800	2 x 800	240 W	220 / 110 VDC	2.18 Amp
EDCB - 1200	2 x 1200	250 W	220 / 110 VDC	2.27 Amp

Brake Parameters									
Brake Size	ØA	ØB	PCD - C	ØD	L	H	F	" a " Airgap	R
EDCB - 90	190 (± 0.2)	65.1 (+0.05)	170 (±0.1)	149 (-0.2)	30 (-0.2)	68.7 (±0.2)	48	0.2 (+ 0.05)	6 x M8 x 90mm L
EDCB - 120	240 (± 0.2)	65.1 (+0.05)	215 (±0.1)	174 (-0.2)	20 (-0.2)	52.2 (±0.2)	48	0.2 (+ 0.05)	4 x M10 x 65mm L
EDCB - 180	240 (± 0.2)	65.1 (+0.05)	215 (±0.1)	194 (-0.2)	30 (-0.2)	78.2 (±0.2)	48	0.2 (+ 0.05)	4 x M10 x 90mm L
EDCB - 210	242 (± 0.2)	65.1 (+0.05)	215 (±0.1)	194 (-0.2)	30 (-0.2)	78.2 (±0.2)	48	0.2 (+ 0.05)	4 x M10 x 90mm L
EDCB - 225	245 (± 0.2)	65.1 (+0.05)	215 (±0.1)	194 (-0.2)	30 (-0.2)	78.2 (±0.2)	48	0.2 (+ 0.05)	4 x M10 x 100mm L
EDCB - 275	245 (± 0.2)	65.1 (+0.05)	215 (±0.1)	194 (-0.2)	30 (-0.2)	78.2 (±0.2)	48	0.2 (+ 0.05)	4 x M10 x 100mm L
EDCB - 300	275 (± 0.2)	65.1 (+0.05)	245 (±0.1)	225 (-0.2)	30 (-0.2)	78.2 (±0.2)	48	0.2 (+ 0.05)	4 X M10 x 100mm L
EDCB - 350	275 (± 0.2)	65.1 (+0.05)	245 (±0.1)	225 (-0.2)	30 (-0.2)	78.2 (±0.2)	48	0.2 (+ 0.05)	4 X M10 x 100mm L
EDCB - 360	248 (± 0.2)	65.1 (+0.05)	218 (±0.1)	194 (-0.2)	30 (-0.2)	85.2 (±0.2)	48	0.2 (+ 0.05)	4 X M10 x 100mm L
EDCB - 450	290 (± 0.2)	65.1 (+0.05)	262 (±0.1)	241 (-0.2)	30 (-0.2)	78.2 (±0.2)	48	0.2 (+ 0.05)	4 X M10 x 100mm L
EDCB - 600	300 (± 0.2)	65.1 (+0.05)	275 (±0.1)	255 (-0.2)	35.6 (-0.2)	86.2 (±0.2)	48	0.2 (+ 0.05)	4 X M10 x 110mm L
EDCB - 750	300 (± 0.2)	65.1 (+0.05)	275 (±0.1)	255 (-0.2)	35.6 (-0.2)	86.2 (±0.2)	48	0.2 (+ 0.05)	6 X M10 x 110mm L
EDCB - 800	300 (± 0.2)	65.1 (+0.05)	275 (±0.1)	255 (-0.2)	35.6 (-0.2)	86.2 (±0.2)	48	0.2 (+ 0.05)	6 X M10 x 110mm L
EDCB - 1200	358 (± 0.2)	65.1 (+0.05)	318 (±0.1)	292 (-0.2)	40 (-0.2)	97.2 (±0.2)	48	0.2 (+ 0.05)	4 x M12 x 120mm L

Rotor Spline details as per DIN 5480				
Brake Size	Reference diameterer - dB	No. of Teeth - Z	Pressure Angle - a	Module - m
EDCB - 90	55	26	30°	2
EDCB - 120	65	20	30°	3
EDCB - 180				
EDCB - 210				
EDCB - 225				
EDCB - 275				
EDCB - 300				
EDCB - 350				
EDCB - 360				
EDCB - 450	75	24	30°	3
EDCB - 600				
EDCB - 750				
EDCB - 800				
EDCB - 1200				

Important:-

- ▶ Temperature Range -5° to +45°C.
- ▶ Permissible voltage change +5% to -10%.
- ▶ German non asbestos friction liner.
- ▶ Brake to be operate with over excitation voltage rectifier.

EMCO® & EMCO-Simplatroll®

making machines friendly

The brands emco & emco-simplatroll stand for uncompromised quality in products as well the services. Products that are safe & reliable and service that makes our products and your machines perform efficiently.



Regd. Office :

1st Floor, Sita Mauli, above Bank of Maharashtra, Madanlal Dhingra Road
Panch Pakhadi, Thane (West), 400 602, INDIA

Tel : +91 (0) 22 2540 5490 / 2545 2244 / 2541 5913 / 2541 5914

Fax : +91 (0) 22 2545 2233

Email : mktg@emco-dynatorq.in

Unit I :

Shivam Industrial Estate, Bldg. No. 3, Gala No. 12A & 12B

Tungareshwar Phata Road, Sativali, Vasai (E), Thane - 401208

Tel : +91 (0) 250 2694 777 / 6294 888 / 6063 999 • Fax : +91 (0) 250 2481 086

Email : vasai@emco-dynatorq.in

Unit II :

1003, GIDC, Waghodia, Dist. Baroda 391 760, Gujarat

Tel : +91 (0) 2668 262186 / 263089 • Telefax : +91 (0) 2668 262180

Cell : +91 90990 78735

Email : dynatorq@gmail.com / marketing.dynatorq@gmail.com

Unit III :

Gala No. 6A & 8, Kedarnath Bldg. Tungareshwar Indl. Estate, Sativali, Vasai (E)

Tel : +91 (0) 250 2480 178 / 2480 921

Unit IV :

1426, GIDC Waghodia, Dist. Baroda 391 760, Gujarat

Tel : +91 (0) 2668 290761



ISO 9001 : 2008



QAC/R91/1264
QAC/R91/1382



Emco Dynatorq Pvt. Ltd.

(Formerly Emco Lenze Pvt. Ltd.)

CIN NO. : U74999MH1991PTC061109

Website : www.emco-dynatorq.in