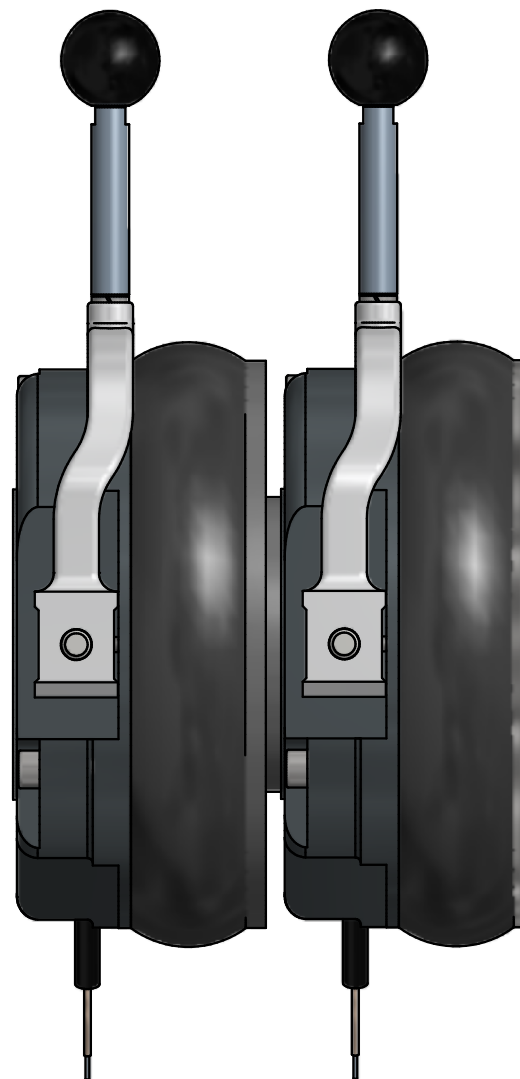
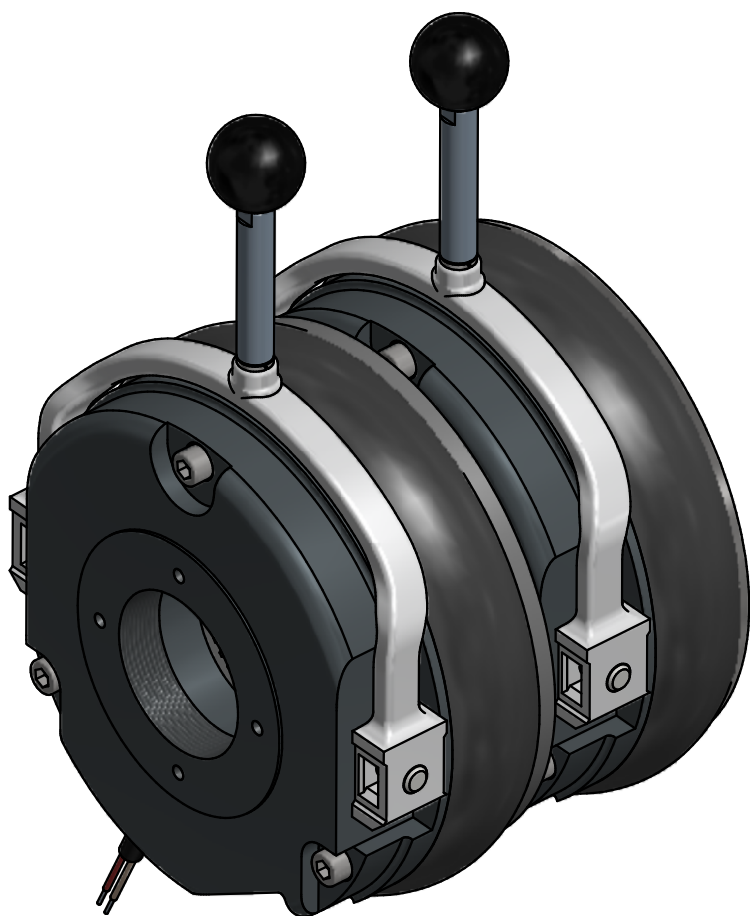


EMCO - Simplatroll

DC Spring Applied Double Rotor Brake

Type - 14.458.xx.DB (Normally On)



Salient Features of Type - 14.458.xx.DB

- ▶ **Deadman Type** Manual Release
- ▶ Braking Torque up to 1600 Nm
- ▶ Compact Size
- ▶ Easy Installation
- ▶ Rust Protection to All Metal Parts
- ▶ Simple Wear Adjustment
- ▶ Coil with ' F ' Class Insulation #
- ▶ Non Asbestos German friction liner
- ▶ Use of Special Bonding Agent
- ▶ Tacho Mounting possible
- ▶ Microswitch available on request
- ▶ Low rotor inertia
- ▶ Cold climate versions available

- Higher coil insulation available on request.

Applications

- ▶ Cranes & Hoists,
- ▶ Construction Machinery,
- ▶ Textile Machines
- ▶ Windmills
- ▶ Conveyors,
- ▶ Pallet Truck Drives
- ▶ Machine Tools
- ▶ Printing Machines
- ▶ Elevators,

EMCO Dynatorq Pvt. Ltd.

(Formerly Emco Lenze Pvt. Ltd.)

Regd. Office :

1st Floor, Sita Mauli, above Bank of Maharashtra,
Madanlal Dhingra Road Panch Pakhadi,
Thane (West), 400 602, INDIA

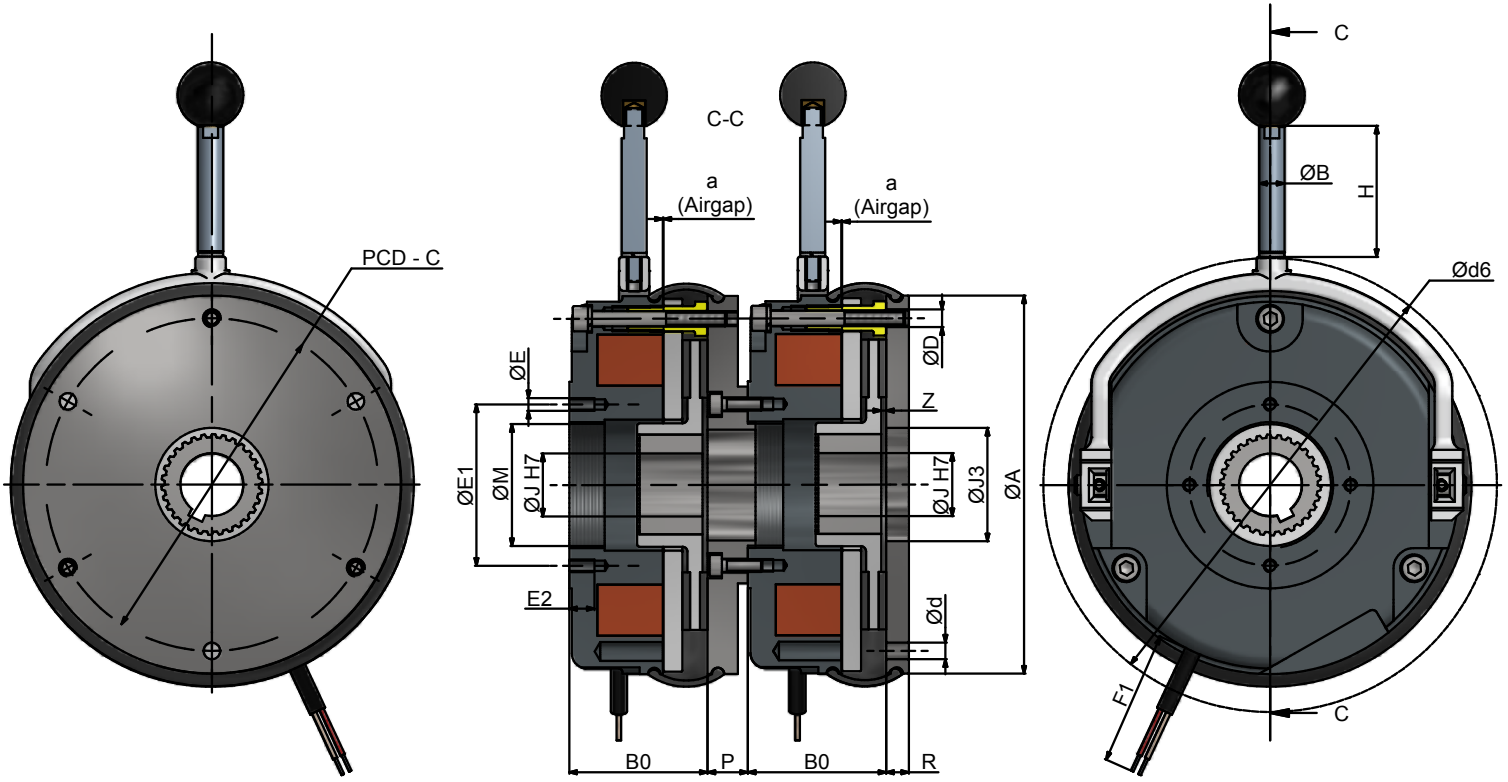
Tel. : +91 (0) 22 2540 5490 / 2545 2244 / 2541 5913 / 2541 5914

Fax : +91 (0) 22 2545 2233

Email : mktg@emco-dynatorq.in

Website : www.emco-dynatorq.in

Brake Dimension Sheet



Brake shown with mounting Flange & Rubber Seal

Brake Size	F1
14.458.06 to 14	410
14.458.16 to 31	610

PARAMETERS

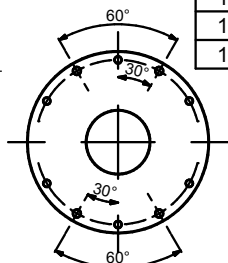
Brake Size	Input Power	Torque	a (Airgap)	ØA	PCD-C	ØD	Ød	ØM	ØE1	ØE	E2	ØJ H7	ØJ3	B0	P	R	Z	L	ØB	H	Ød6
14.458.06	2x20	2x4	0.2	87	72	3xM4	3x4.5	25	37.7	4xM4	10	15	31	36.3	12	11	1	18	9	30	120
14.458.08	2x25	2x8	0.2	105	90	3xM5	3x5.5	32	49	4xM5	12	24*	41	42.8	12	12	1.5	20	9	50	140
14.458.10	2x30	2x16	0.2	130	112	3xM6	3x6.6	42	54	4xM5	15	24*	40	48.4	13	14.5	2	20	10	33.5	160
14.458.12	2x40	2x32	0.3	150	132	3xM6	3x6.6	50	64	4xM5	15	28*	45	54.9	16	15	2	25	10	52.5	185
14.458.14	2x50	2x60	0.3	165	145	3xM8	3x9	60	75	4xM6	15	34*	55	66.3	17	15	2	30	12	62.5	210
14.458.16	2x76	2x100	0.3	190	170	3xM8	3x9	68	85	4xM6	15	38*	65	72.5	20	18	2.25	30	12	95	235
14.458.18	2x85	2x150	0.4	217	196	6xM8	**4x9	75	95	4xM8	15	45	75	83.1	20	18	2.75	35	14	120	270
14.458.20	2x100	2x260	0.4	254	230	6xM10	6x11	85	110	4xM10	20	50	90	97.6	20	20	3.5	40	14	239	308
14.458.25	2x110	2x400	0.5	302	278	6xM10	6x11	115	140	4xM10	20	70*	120	106.7	25	25	4.5	50	16	239	360
14.458.31	2x140	2x600	0.5	302	278	6xM10	6x11	115	140	4xM10	20	70*	120	120.7	25	25	4.5	50	16	239	360
14.458.31	2x180	2x800	0.5	302	278	6xM10	6x11	115	140	4xM10	20	70*	120	120.7	25	25	4.5	50	16	239	360

Liner wear is directly proportional to the speed at which braking takes place.

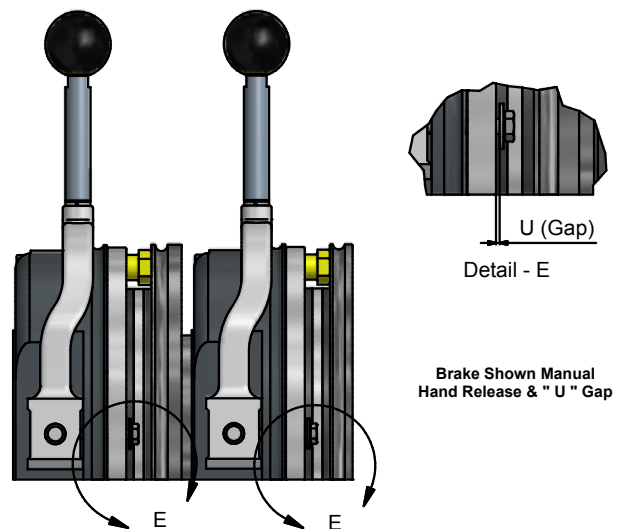
Important :-

- For vertical mounting contact us.
- For applications with motor operated with VFD contact us for special circuit.
- Standard voltages : 24 V DC, 96 V DC & 190 V DC. (Other voltages on request.)
- P : Coil power at 20° C.
- Permissible voltage change + 5% to - 10%.
- Recommended ISO shaft tolerances Up to Ø50 mm = k6, Over Ø50 = m6.
- Keyways to DIN 6885 / IS : 2048. (Js9)
- (* Non std. Keyway & Hub Bore)
- Specifications are subject to change without notice.

PARAMETERS	
Brake Size	U Gap
14.458.06	1
14.458.08	1
14.458.10	1
14.458.12	1
14.458.14	1
14.458.16	1.5
14.458.18	1.5
14.458.20	1.5
14.458.25	2
14.458.31	2



** Flange Mounting Detail for Size - 14.458.18



Brake Shown Manual Hand Release & " U " Gap