

Ultra - Thin Servo Motor Brake Model - UTSB - xxx (300 to 500)



Fail-safe spring-applied brake in flat and space-saving design

Our brakes – perfect for your safe application

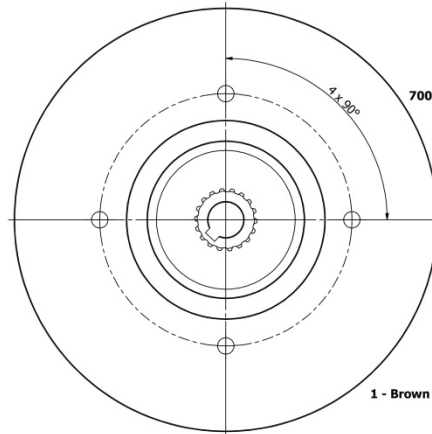
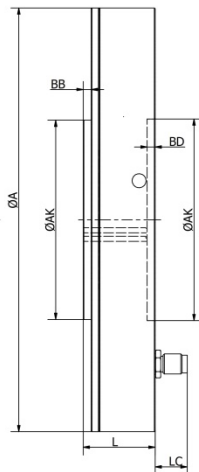
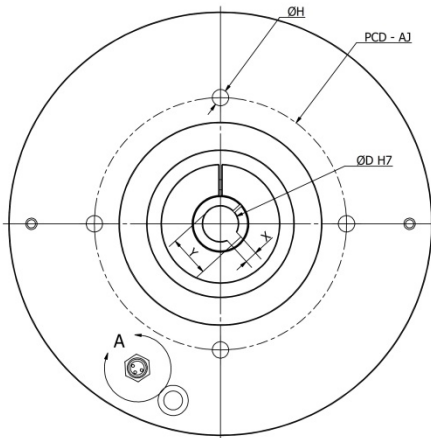
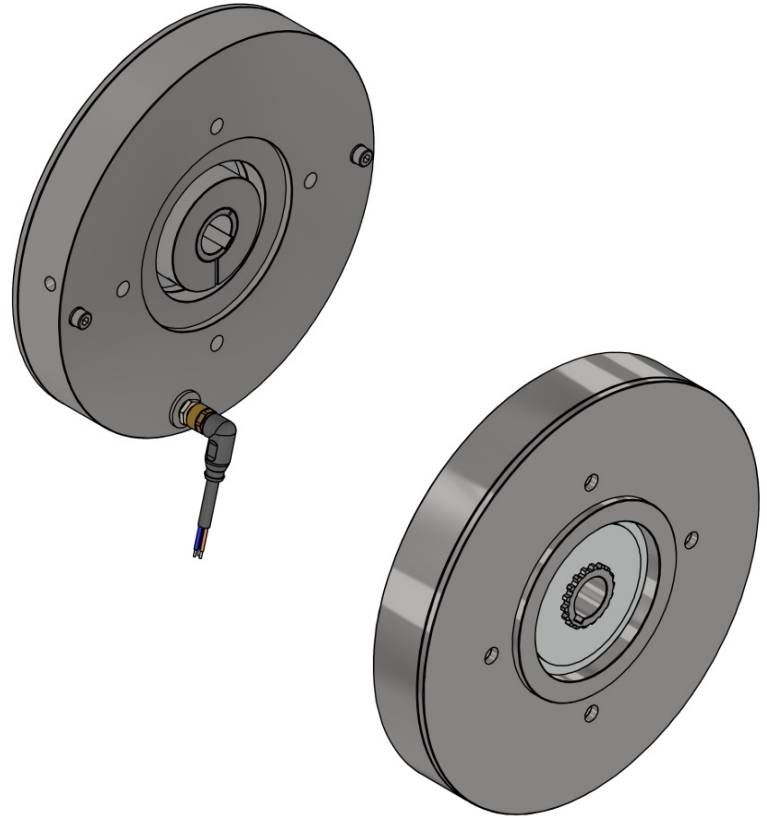
EMCO industrial brakes – this stands for excellent service and smart innovation, which we consistently use for the benefit of our customers.

The Ultra-Thin Servo motor brake

- # Fail-safe spring applied brake
- # Holding brake with emergency stop function
- # A total of 5 different sizes available
- # Torque range from 4 Nm to 28.3 Nm
- # Standard temperature range from -10°C to +100°C

Applications

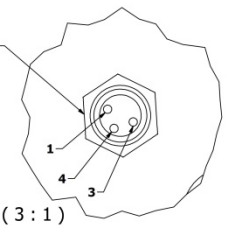
- # Robotics & Automation
- # Automated Guided Vehicles (AGVs)
- # Medical technology



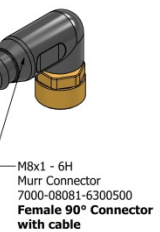
M8x1 - 6g
Murr Connector
7000-08553-9700020
Male Connector

- 1 (+)
- 4 (N/O)
- 3 (-)

A (3 : 1)



- 1 - Brown Wire (+)
- 3 - Blue Wire (-)
- 4 - Black Wire (N/O)



Brake Parameters																
Model No.	Voltage	Wattage	Torque (Nm)	Bore ØD H7	Width - X	Depth - Y	ØA	ØH	PCD - A1	ØAK	BB	BD	L	LC	Bolt Size	Bolt Tightening Torque (Nm)
300	24	30	4	14, 16	5 (Js9)	17.6 (+0.1)	168	6.5	100 (±0.1)	80	3.2	3.2	28.5	16	4 x M6	9.0
400	24	30	10.2	19	6 (Js9)	21.8 (+0.1)	186	6.5	115 (±0.1)	95	3.2	3.2	28.5	16	4 x M6	9.0
450	24	30	10.2	24	8 (Js9)	27.3 (+0.1)	208	6.5	130 (±0.1)	110	3.2	3.2	28.5	16	4 x M6	9.0
500	24	76	28.3	24, 28	8 (Js9)	31.3 (+0.1)	200	10.6	165 (±0.1)	130	3.2	6.4	33.7	16	4 X M10	47

Ultra - Thin Servo Motor Brake Model - UTSB - 34 (NEMA Motor Frame) Fail-safe spring-applied brake in flat and space-saving design



Our brakes – perfect for your safe application

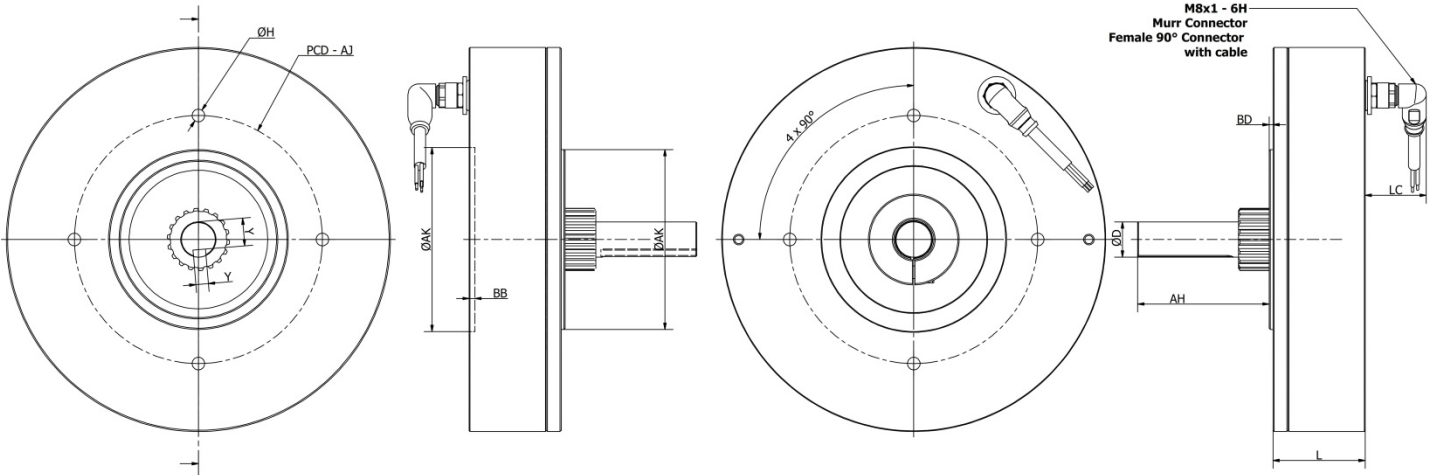
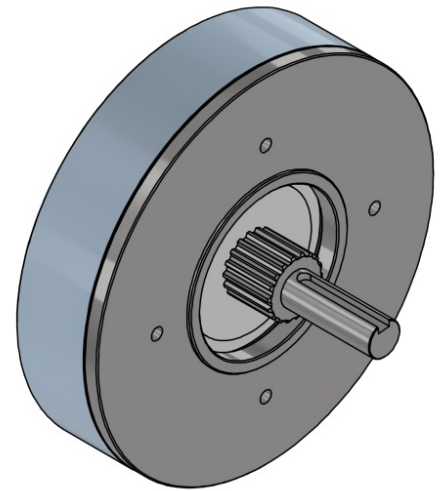
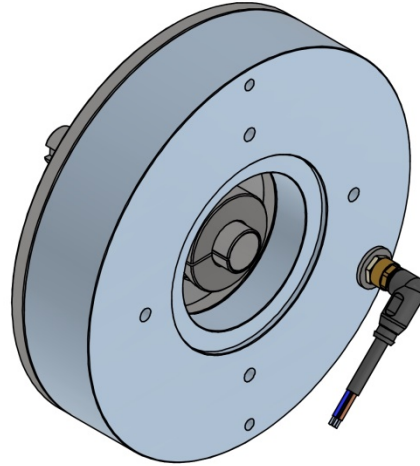
EMCO industrial brakes – this stands for excellent service and smart innovation, which we consistently use for the benefit of our customers.

The Ultra-Thin Servo motor brake

- # Fail-safe spring applied brake
- # Holding brake with emergency stop function
- # Standard temperature range from -10°C to +100°C

Applications

- # Robotics & Automation
- # Automated Guided Vehicles (AGVs)
- # Medical technology



M8x1 - 6H
Murr Connector
Female 90° Connector
with cable

Brake Parameter Dimension in inches (NEMA MODEL)																			
Model No.	NEMA Frame	Voltage	Wattage	Input Shaft ØD No key	Output Shaft ØD with Keyway	Width - X	Depth - Y	Torque (in-lb)	ØA	AH	LB	PCD - AJ	ØAK	BB	BD	SD	ØH	L	LC
UTSB 34	34	24	30	0.5	0.5	0.127 / 0.125	0.425 / 0.435	48	6	1.25	1.25	3.875 (±0.003)	2.875	0.1	0.145	0.591	4 x 0.28	1.44	1

Brake Parameter Dimension in mm																
Model No.	Voltage	Wattage	Input Shaft ØD No key	Output Shaft ØD with Keyway	Torque (Nm)	ØA	AH	LB	PCD - AJ	ØAK	BB	BD	SD	ØH	L	LC
300	24	30	14	14	5.5	152.4	40	40	100 (±0.1)	80	3.2	2.7	15	4 x 7	36.576	25

